



# GC/BSGS

This equipment supplies a constant pressure and a certain amount of gas to the VMB·VMP or main process equipment, and is configured to automatically shut it off and discharge the gas in case of emergency.

## ▶ Product Types

- Gas Cabinet (GDS Series)
- Bulk Specialty Gas System (BSGS)
- Liquid Delivery System

## ▶ Product Features

- Automatic Purge: Safety management and gas purity maintenance
- Automatic Leak Check: Automatic inspection and measurement of decompression and pressurization
- Automatic Cylinder Change: Automated cylinder replacement
- Gas and parts usage history and event log
- Tilt, vibration and seismic detection
- Z-Purge Unit: Maintaining constant positive pressure
- Explosion-proof certification
- Interlock: Door, vent, CGA, etc.





# VMB·VMP

This gas safety distribution/supply equipment receives gas from the gas cabinet and distributes a certain amount of gas at a constant pressure inside the system, supplies gas to a number of main process equipment, and automatically shuts it off and discharge gas in case of emergency.

## ▶ Product Types

- Valve Manifold Box (VMB) : Toxic, corrosive and combustible gas
- Valve Manifold Panel (VMP) : Inert gas

## ▶ Product Features

- Inlet, Outlet Stick Formation
  - 1:4, 1:6, 1:8
  - 2:4, 2:6, 2:8
- Operational Controller Type
  - Full Automatic Type
  - Semi Automatic Type
  - Manual Type



# Gas Module

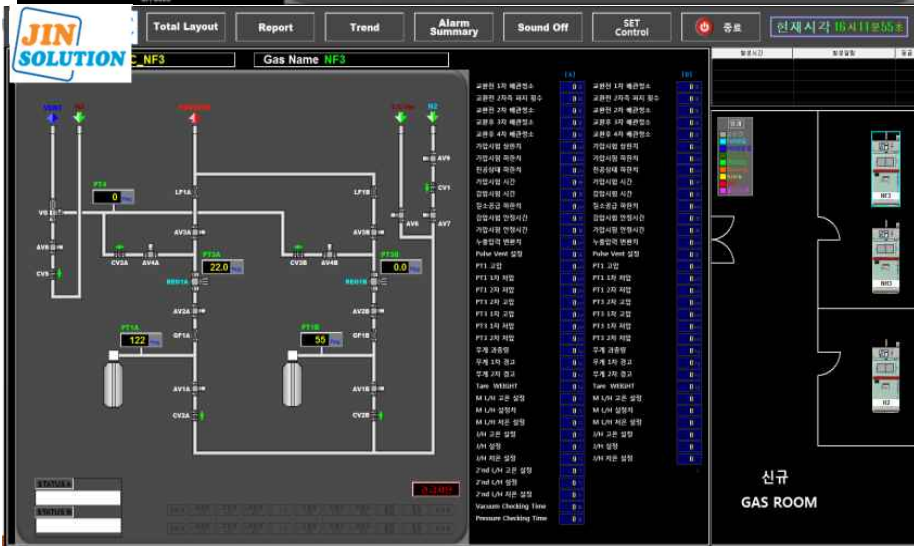
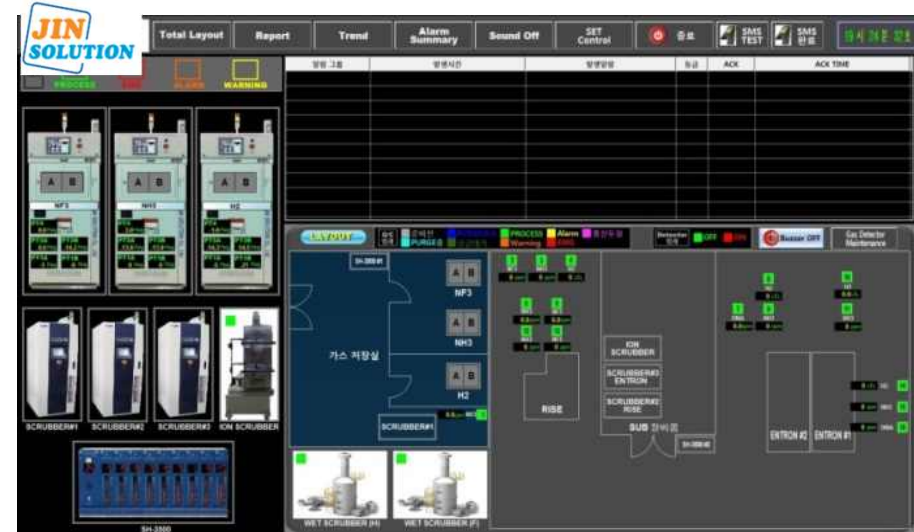
We conduct gas module design, manufacturing, test, and onsite set-up by participating from the initial stage of developing process equipment that designs and manufactures gas module parts for new process equipment.

## ▶ Development Procedure

1. Consultation for equipment specifications
2. Consultation for gas panel/box size and equipment options
3. Design of gas panel/box
4. Gas panel/box production/assembly
5. Test and inspection of gas module part (gas panel/box)
6. Packaging and onsite set-up

# Gas Monitoring System

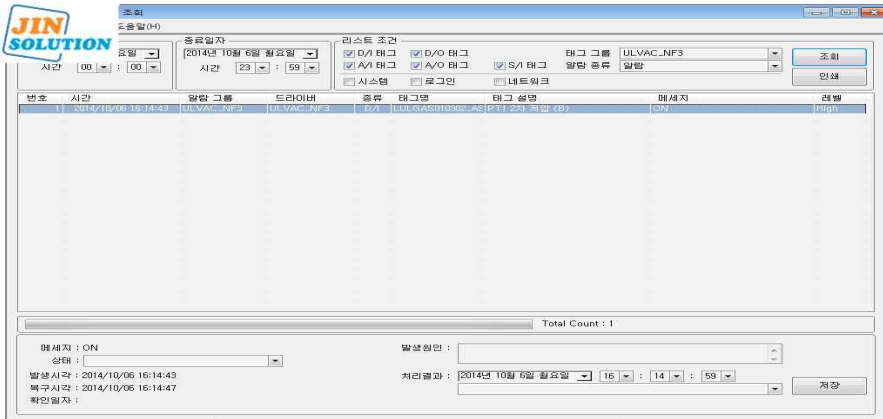
This system can check the status of the gas supply system in real time in the control room or office, and manage the history and prevent safety accidents through the operation status check and remote control of each supply system.



## Full Equipment Monitoring in Gas Room

## Detailed Monitoring by Equipment

- ▶ Product Features
- Customizable map, alarm sound, interface, etc.
- Sending a text message when an error occurs



## Historical Pressure Analysis and Trend Implementation / Alarm Inquiry

## Upper Blocking System

